



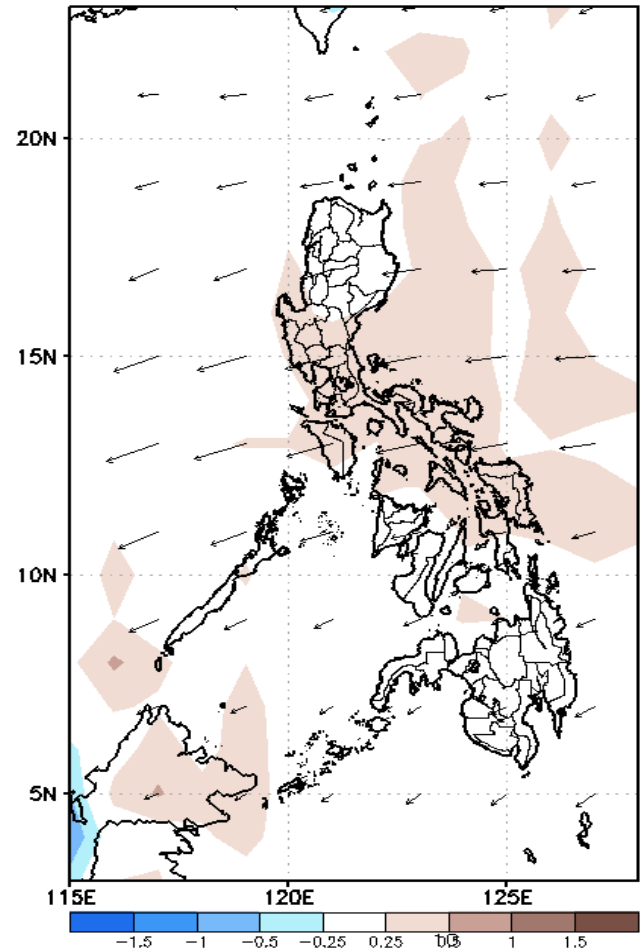
# Week 1 & Week 2 Forecast for the Philippines using GEFS Model



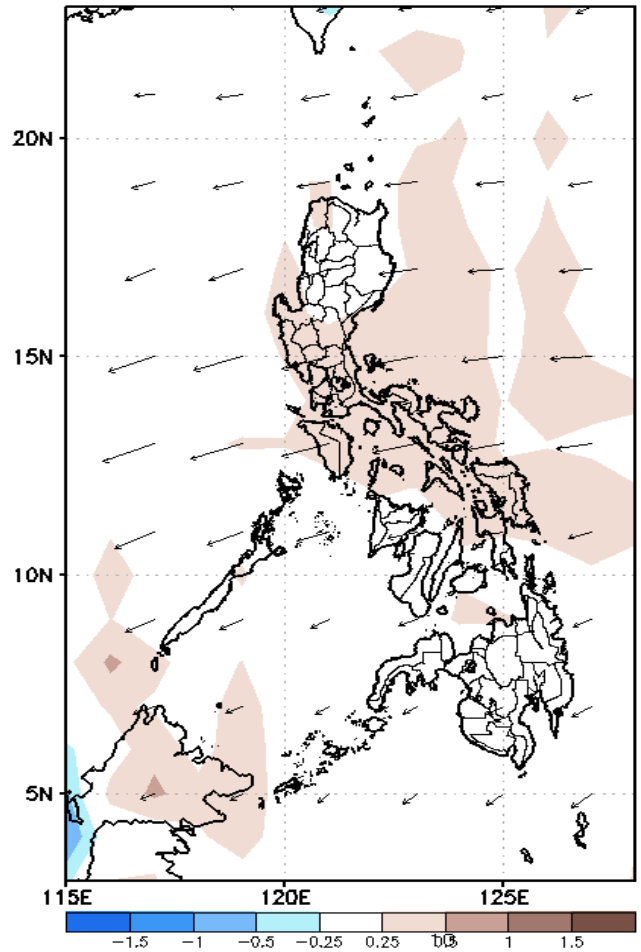
# GEFS Week-1 Forecasts: Divergence & Wind Anomaly

## Week 1: Aug 13-19, 2020

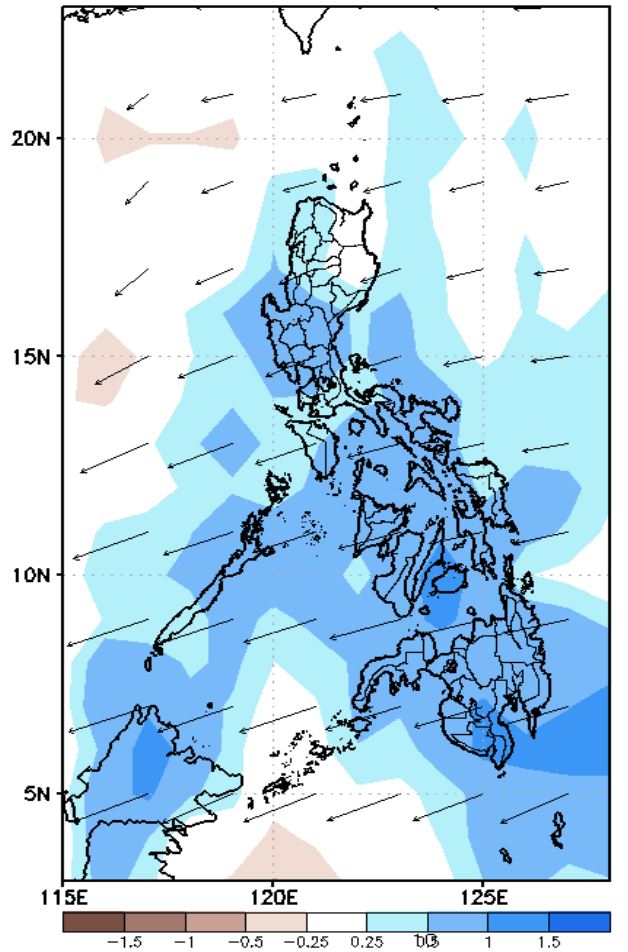
GEFS Week-1 850-hPa Divergence and Wind Anom.  
Valid: 20200813 - 20200819



GEFS Week-1 700-hPa Divergence and Wind Anom.  
Valid: 20200813 - 20200819



GEFS Week-1 200-hPa Divergence and Wind Anom.  
Valid: 20200813 - 20200819



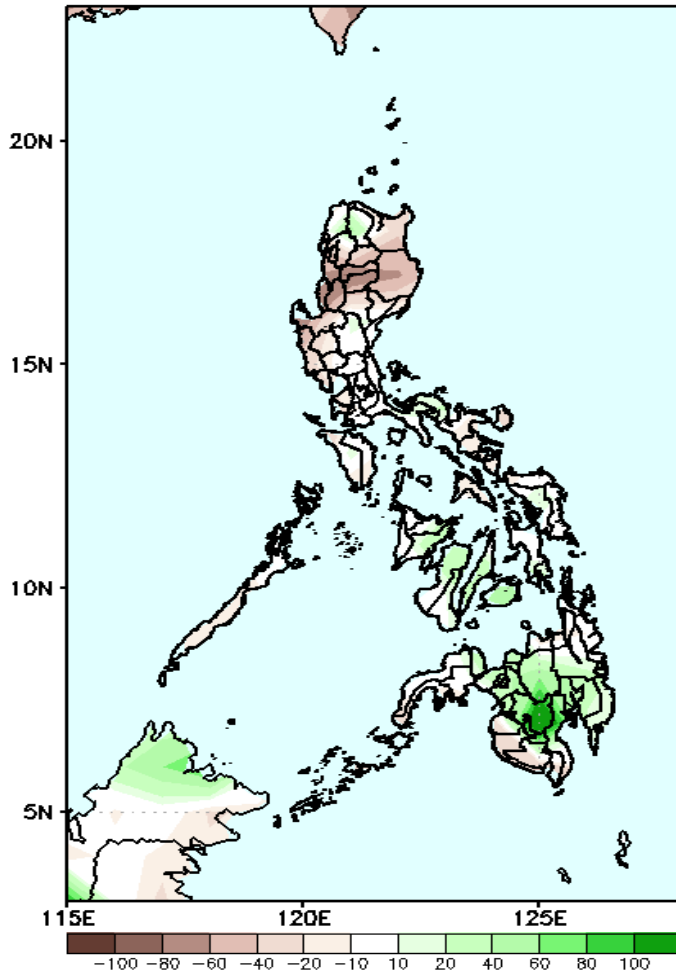
Upper level (200 hPa) Divergence suggest likelihood of heavy precipitation in most parts of the country. Easterlies affecting most parts of the country during the forecast period.



# Precipitation Anomaly and Exceedance Probability > 25/50 mm

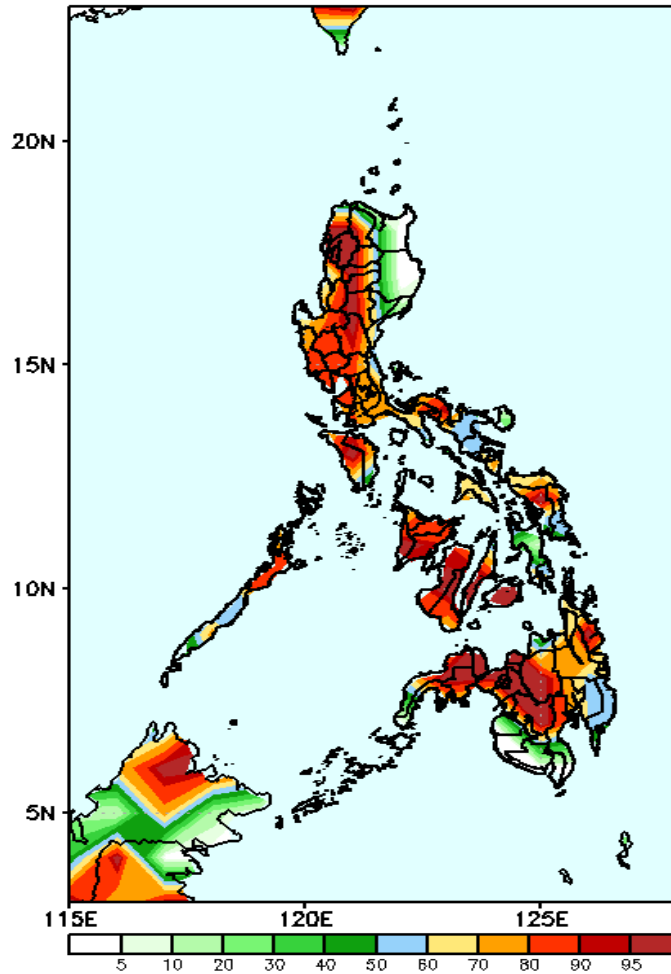
## Week 1: Aug 13-19, 2020

GEFS Week-1 Precip Anomaly  
Valid: 20200813 - 20200819



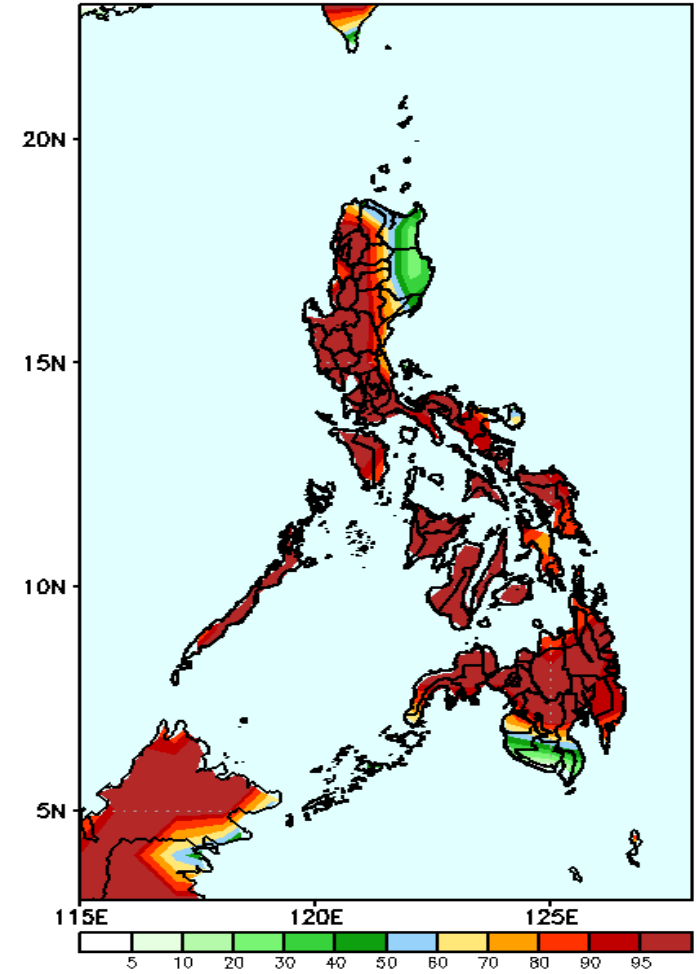
Rainfall deficit of 40-80mm in Cagayan, Isabela, Cordillera and Ilocos Region while increase of rainfall of 60-100mm in North Cotabato is expected during the forecast period.

GEFS Week-1 Exceedance Prob. > 50mm  
Valid: 20200813 - 20200819



High probability of rainfall to exceed 50mm in most parts the country is expected except in the eastern parts of Luzon and southern Mindanao during the forecast period.

GEFS Week-1 Exceedance Prob. > 25mm  
Valid: 20200813 - 20200819

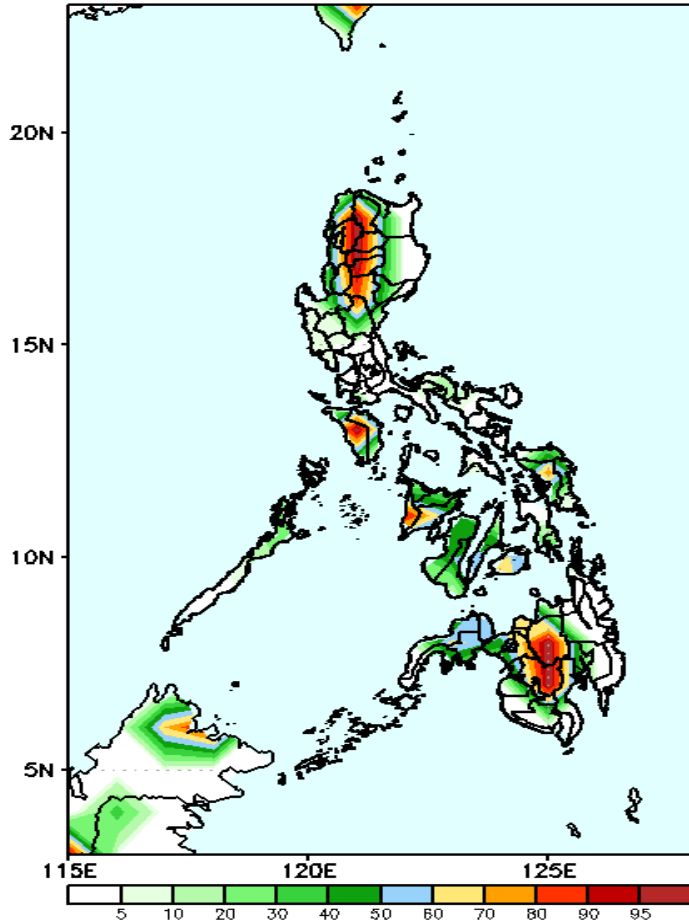


High probability of rainfall to exceed 25mm in most parts of the country is expected except in the provinces of Cagayan, Isabela, Sarangani and South Cotabato during the forecast period.

# Exceedance Probability > 100/150/200 mm

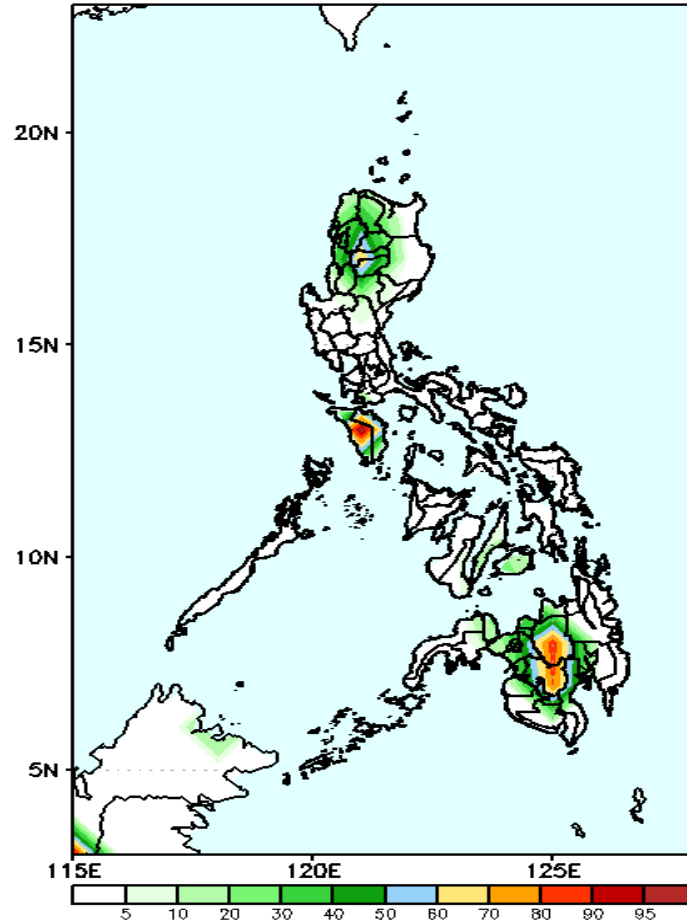
## Week 1: Aug 13-19, 2020

GEFS Week-1 Exceedance Prob. > 100mm  
Valid: 20200813 - 20200819



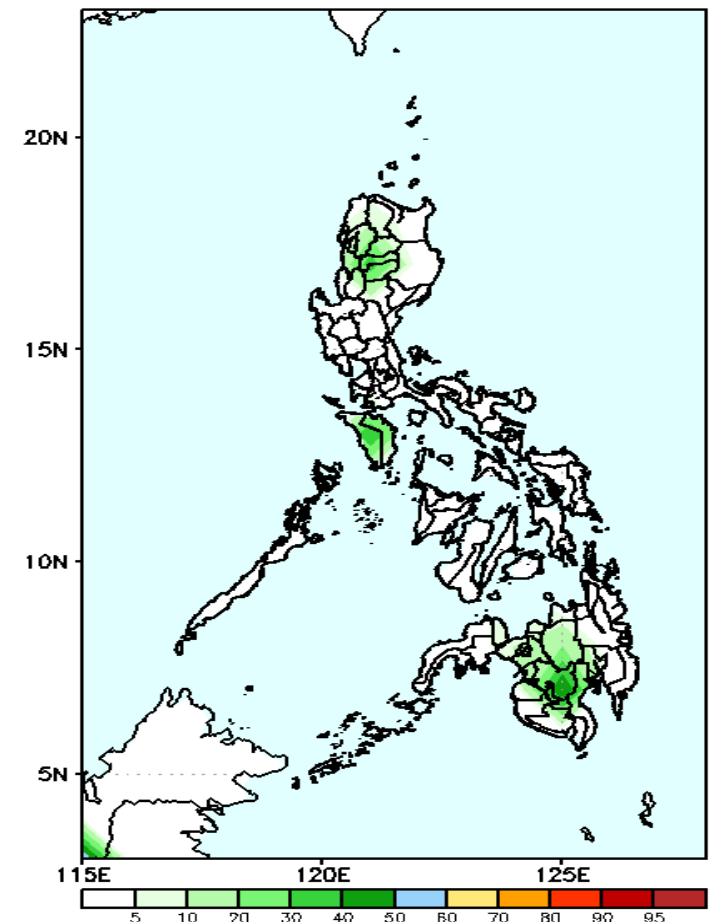
High probability of rainfall to exceed 100mm in northwestern parts of Luzon, Mindoro and in Bukidnon, North Cotabato, Zamboanga del Sur and Lanao provinces while less likely for the rest of the country during the forecast period.

GEFS Week-1 Exceedance Prob. > 150mm  
Valid: 20200813 - 20200819



50-90 probability of rainfall to exceed 150mm in Cordillera Region, Mindoro, Bukidnon and North Cotabato while less likely for the rest of the country during the forecast period.

GEFS Week-1 Exceedance Prob. > 200mm  
Valid: 20200813 - 20200819



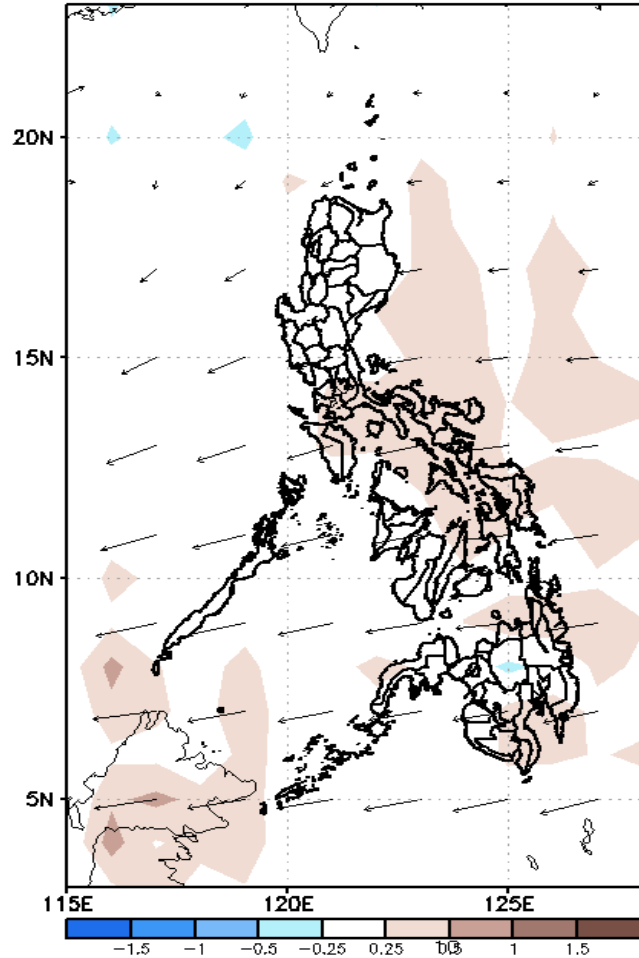
Less probability of rainfall to exceed 200mm in most parts of the country during the forecast period.



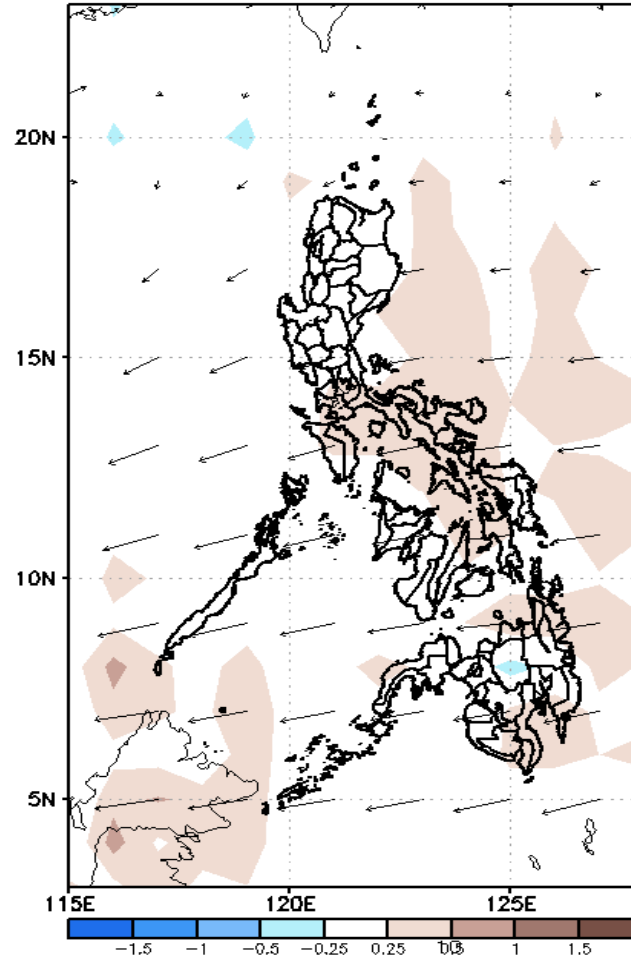
# GEFS Week-2 Forecasts: Divergence & Wind Anomaly

## Week 2: Aug 20-26, 2020

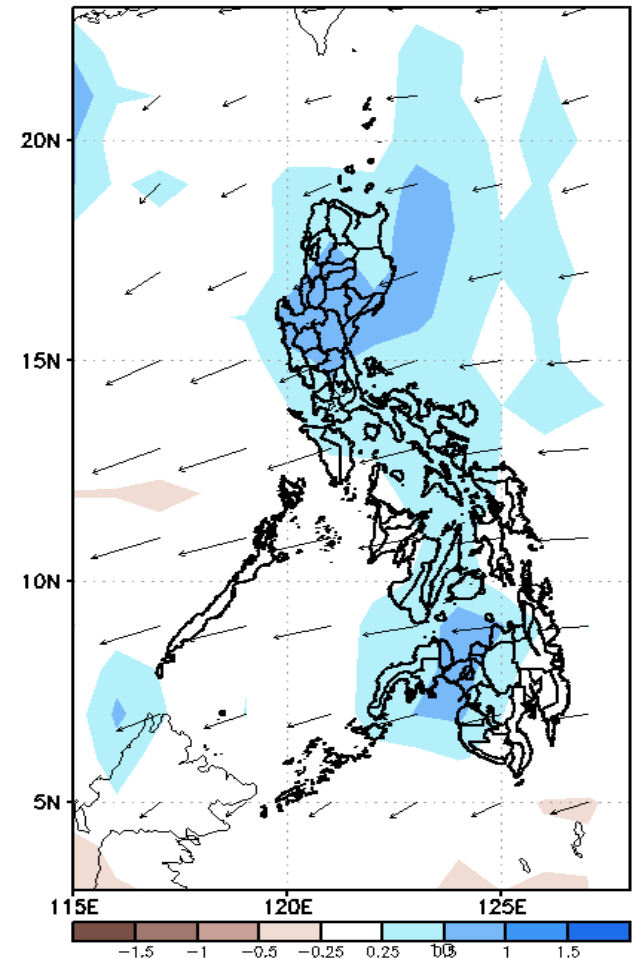
GEFS Week-2 850-hPa Divergence and Wind Anom.  
Valid: 20200820 - 20200826



GEFS Week-2 700-hPa Divergence and Wind Anom.  
Valid: 20200820 - 20200826



GEFS week-2 200-hPa Divergence and Wind Anom.  
Valid: 20200820 - 20200826



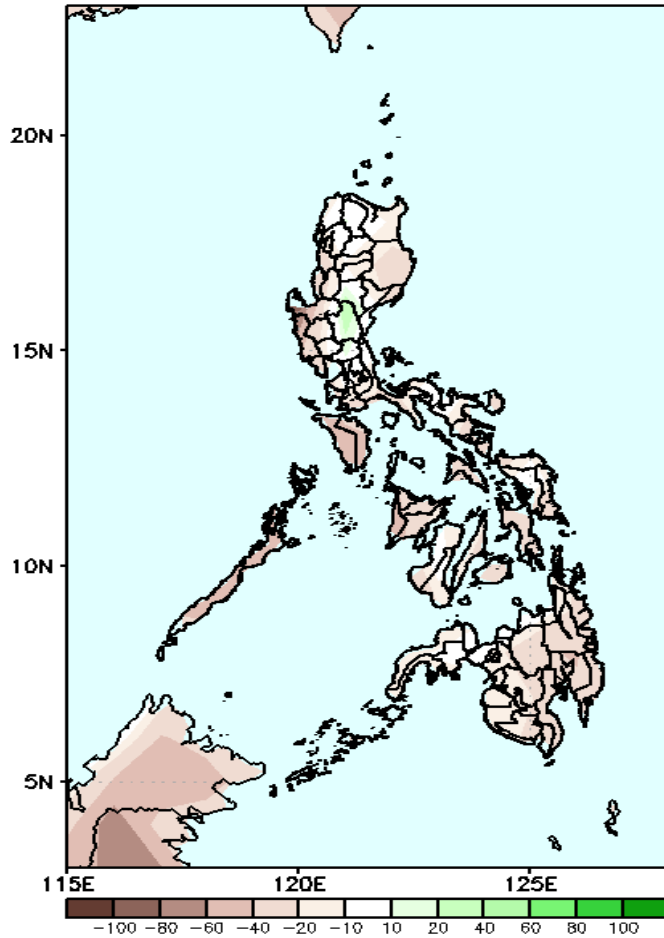
Upper level (200 hPa) Divergence suggest likelihood of light precipitation in most parts of the country. Easterlies affecting most parts of the country during the forecast period.



# Precipitation Anomaly and Exceedance Probability > 25/50 mm

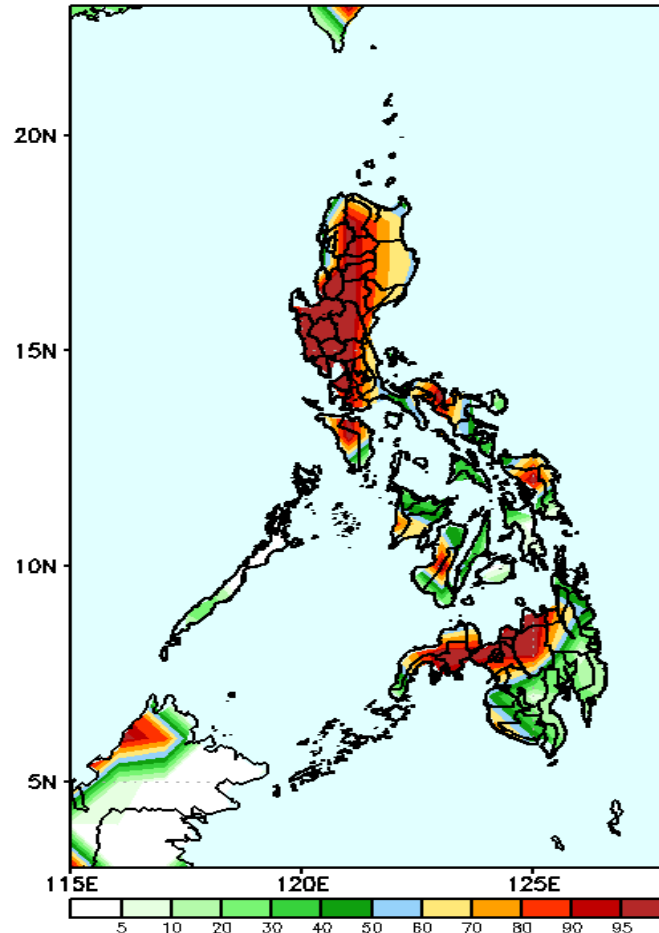
## Week 2: Aug 20-26, 2020

GEFS Week-2 Precip Anomaly  
Valid: 20200820 - 20200826



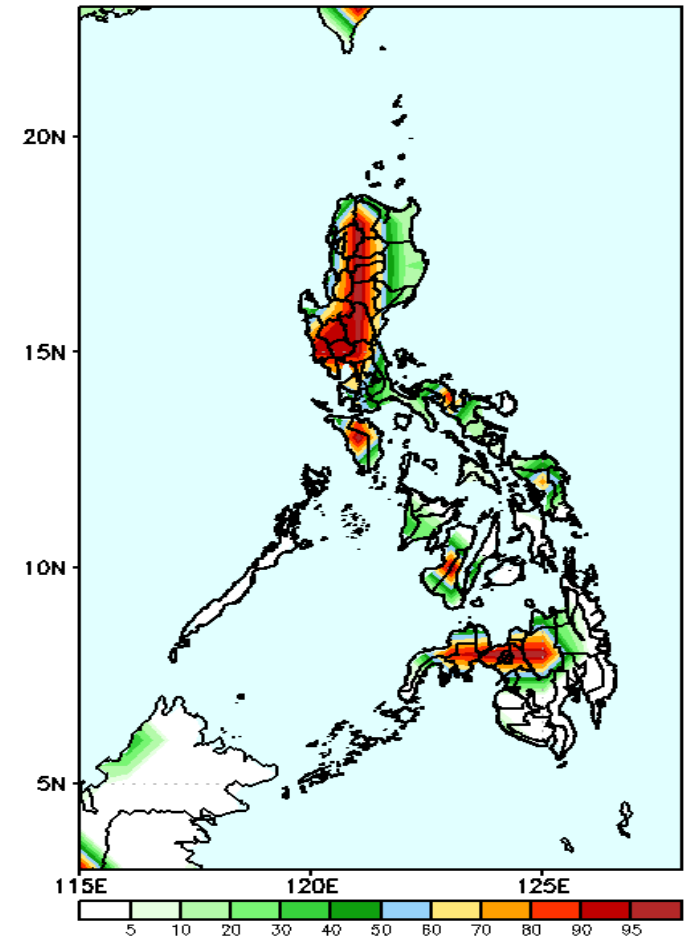
Rainfall deficit of 20-60mm in most parts of the country is expected during the forecast period.

GEFS Week-2 Exceedance Prob. > 25mm  
Valid: 20200820 - 20200826



High probability of rainfall to exceed 25mm in most parts of Luzon, Samar provinces, and in Northern Mindanao and Zamboanga Peninsula is expected while less likely for the rest of the country during the forecast period.

GEFS Week-2 Exceedance Prob. > 50mm  
Valid: 20200820 - 20200826

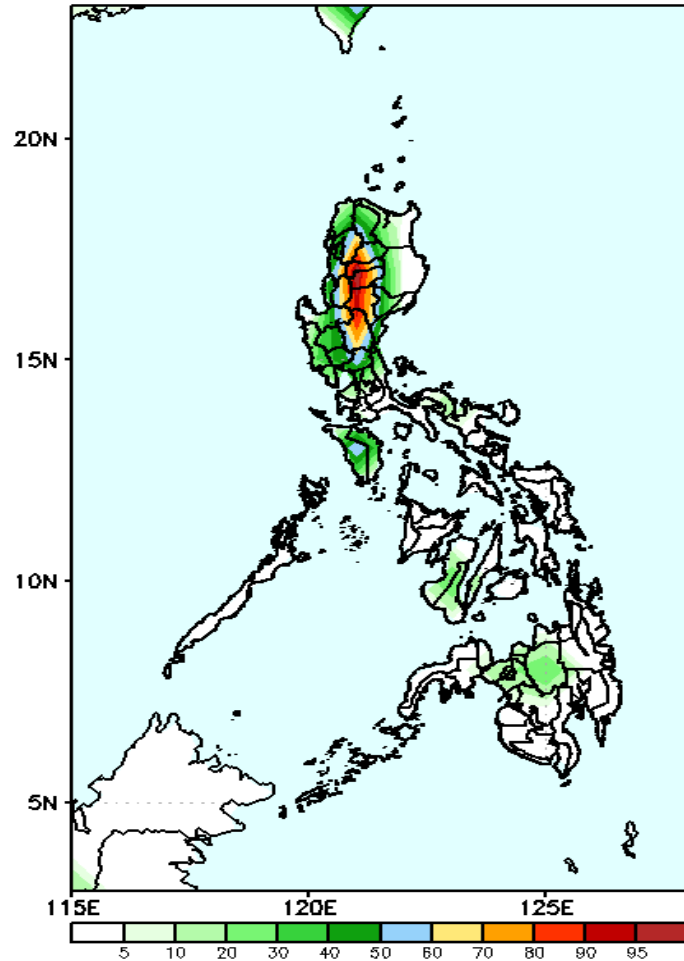


High probability of rainfall to exceed 50mm in most parts of western and central Luzon, in Bukidnon, Lanao provinces and Zamboanga del Sur while less likely for the rest of the country during the forecast period.

# Exceedance Probability > 100/150/200 mm

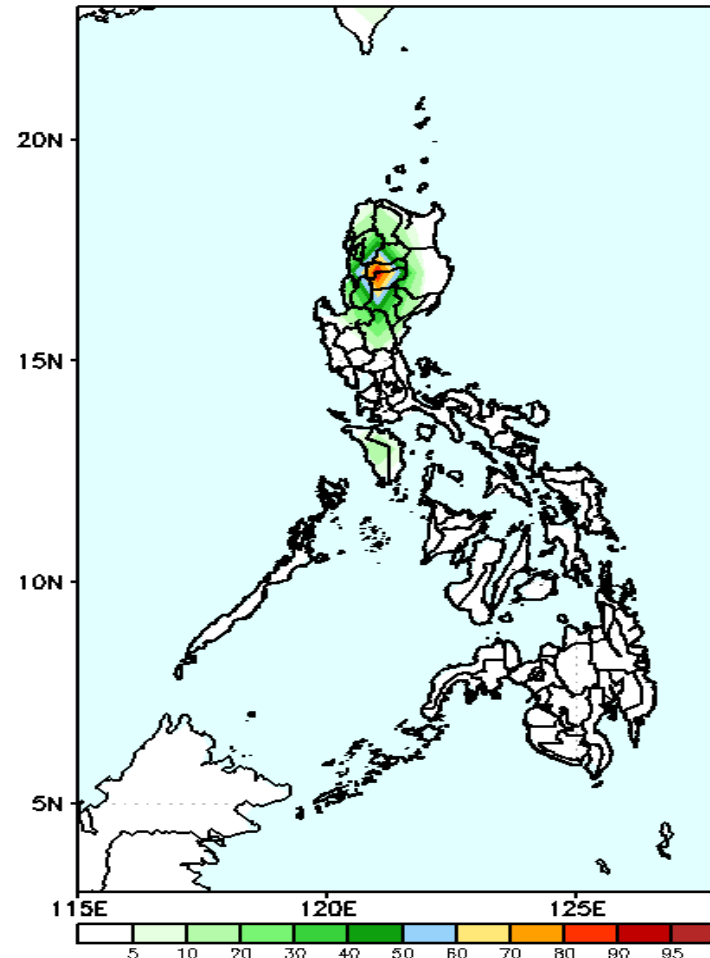
## Week 2: Aug 20-26, 2020

GEFS Week-2 Exceedance Prob. > 100mm  
Valid: 20200820 - 20200826



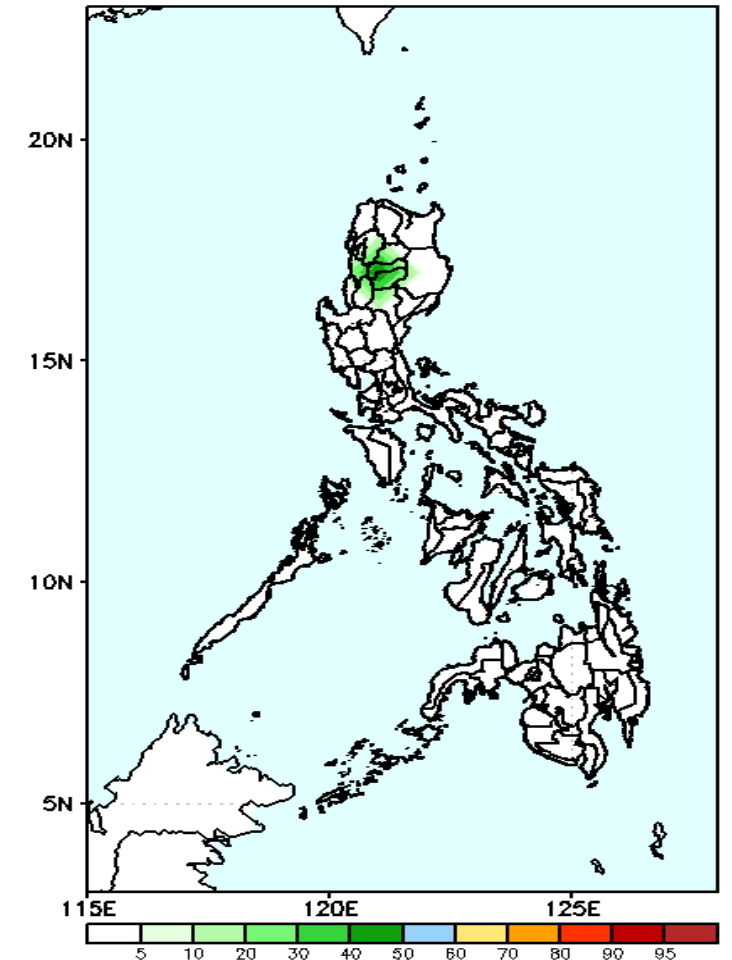
High probability of rainfall to exceed 100mm in Cordillera Region while less likely for the rest of the country during the forecast period.

GEFS Week-2 Exceedance Prob. > 150mm  
Valid: 20200820 - 20200826



70-90 probability of rainfall to exceed 150mm in Mt. Province and Ifugao while less likely for the rest of the country during the forecast period.

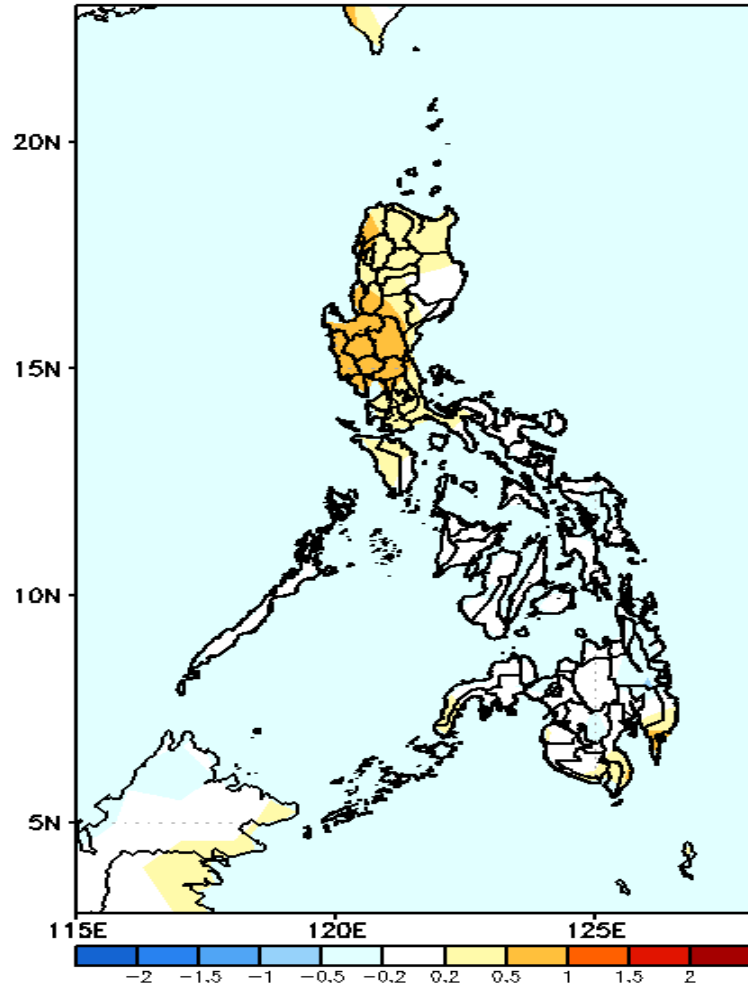
GEFS Week-2 Exceedance Prob. > 200mm  
Valid: 20200820 - 20200826



Less probability of rainfall to exceed 200mm in most parts of the country during the forecast period.

# GEFS Week-1 & 2 Forecasts: T2m Anomaly

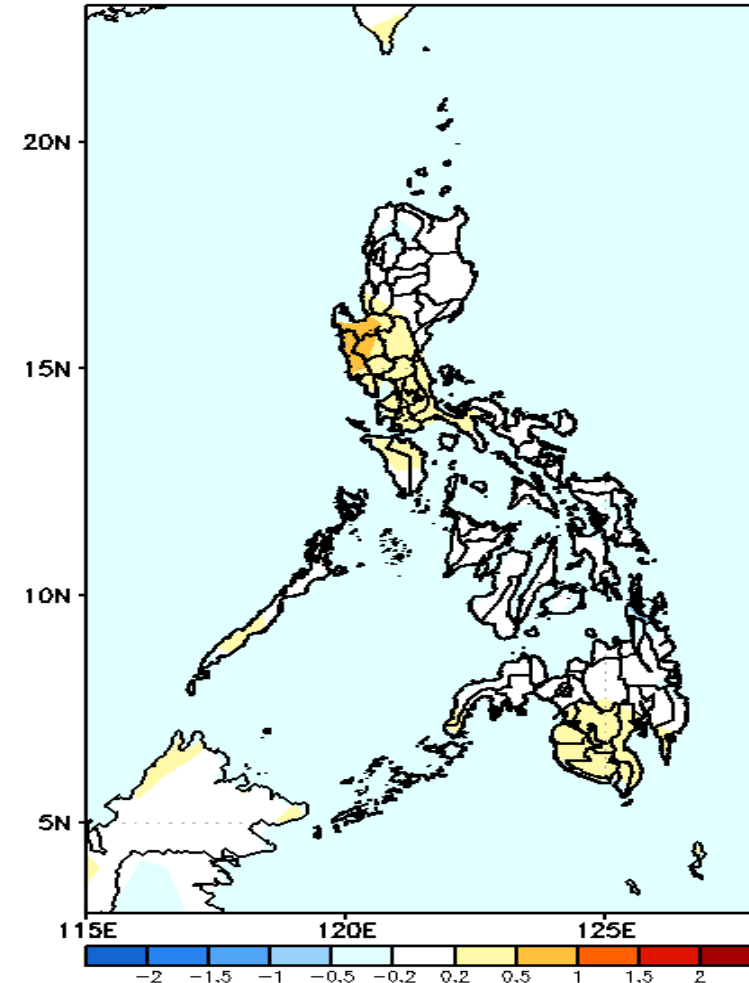
GEFS Week-1 T2m Anomaly  
Valid: 20200813 - 20200819



**2m Temperature Week 1: Aug 13-19, 2020**

Average to slightly warmer than average surface air temperature will likely experience in Luzon while average surface air temperature in Visayas and Mindanao during the forecast period.

GEFS Week-2 T2m Anomaly  
Valid: 20200820 - 20200826



**2m Temperature Week 2: Aug 20-26, 2020**

Slightly warmer than average surface air temperature will likely experience in southern parts of Luzon while average surface air temperature is expected for the rest of the country during the forecast period.